

# CASTLE COUNTRY TRAIL SYSTEM MAP

From sagebrush covered plateaus to pinon and juniper woodlands, to aspen and fir forests, Castle Country trails always lead somewhere.

## Some of our area attractions include:

- Bruin Point
- Carbon County Golf Course
- Gordon Creek Falls/Train Trestle
- Helper Western Mining & Railroad Museum
- Nine Mile Canyon
- North Springs Shooting Range
- Price Canyon Recreation Area
- Scofield State Park
- USU-Eastern Prehistoric Museum

For information regarding events, attractions, destinations, accommodations and more, contact:



UTAH'S CASTLE COUNTRY  
CARBON COUNTY OFFICE OF TOURISM  
www.castlecountry.com  
81 North 200 East  
Price, Utah 84501  
(435) 636-3701  
Email: carbon.travel@carbon.utah.gov

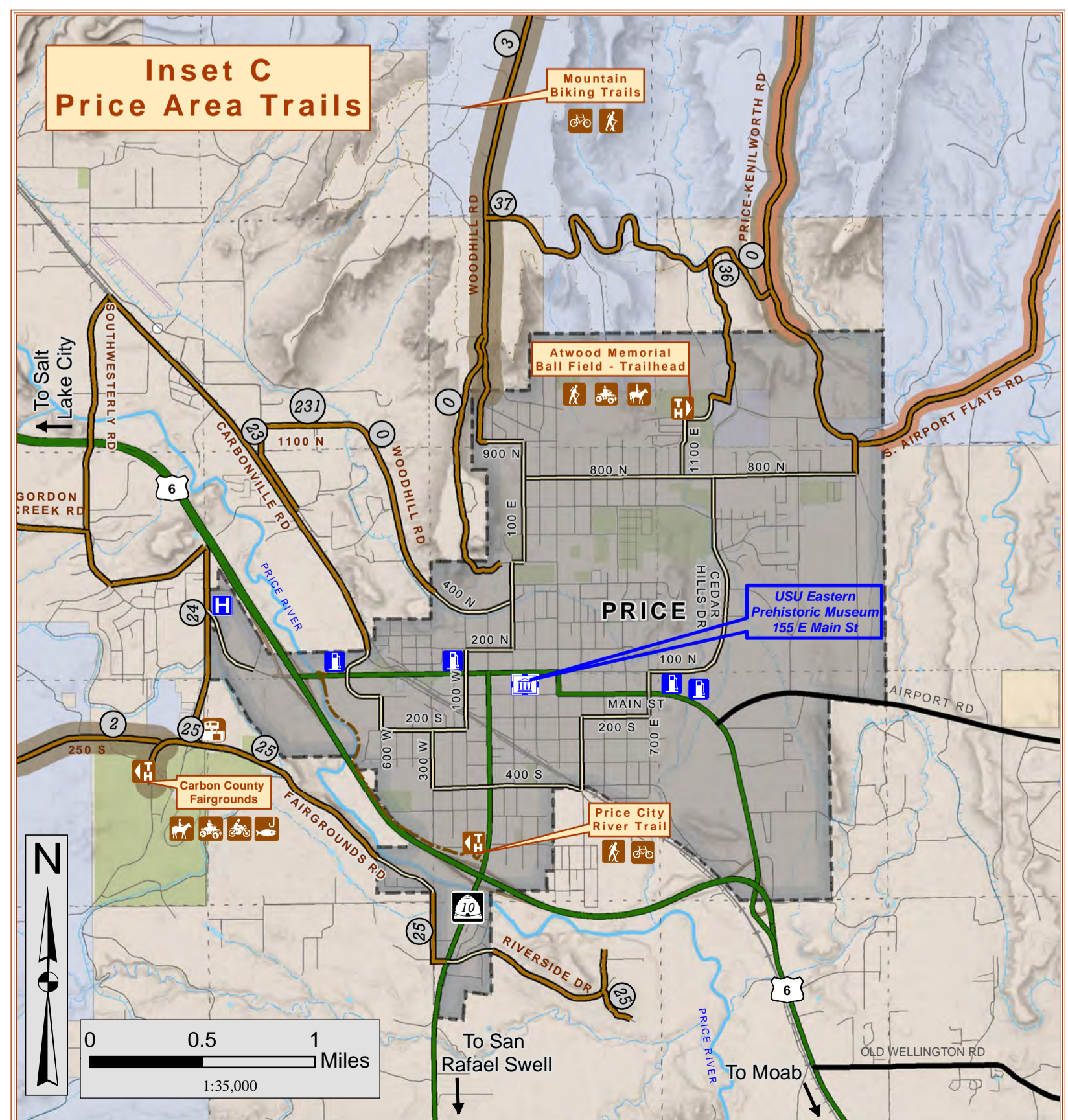
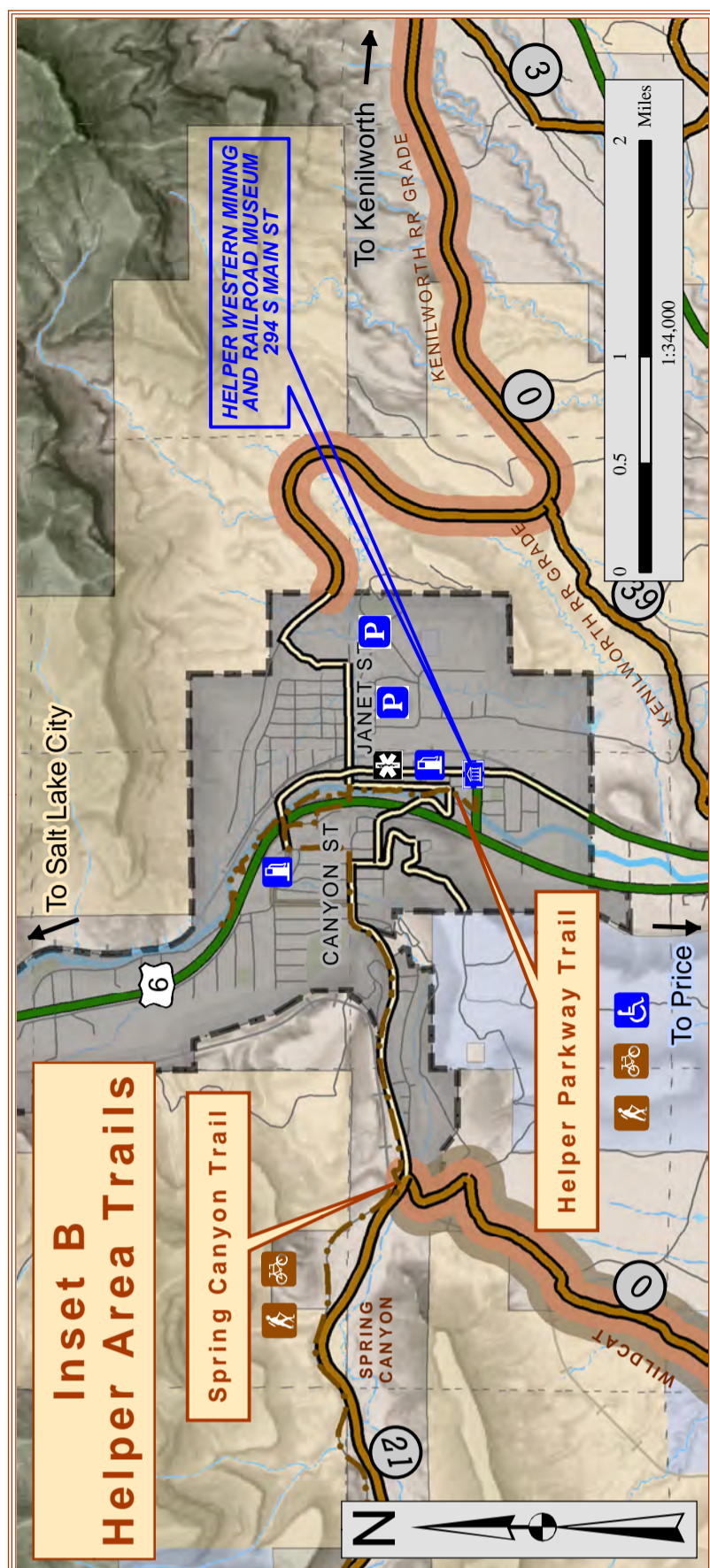
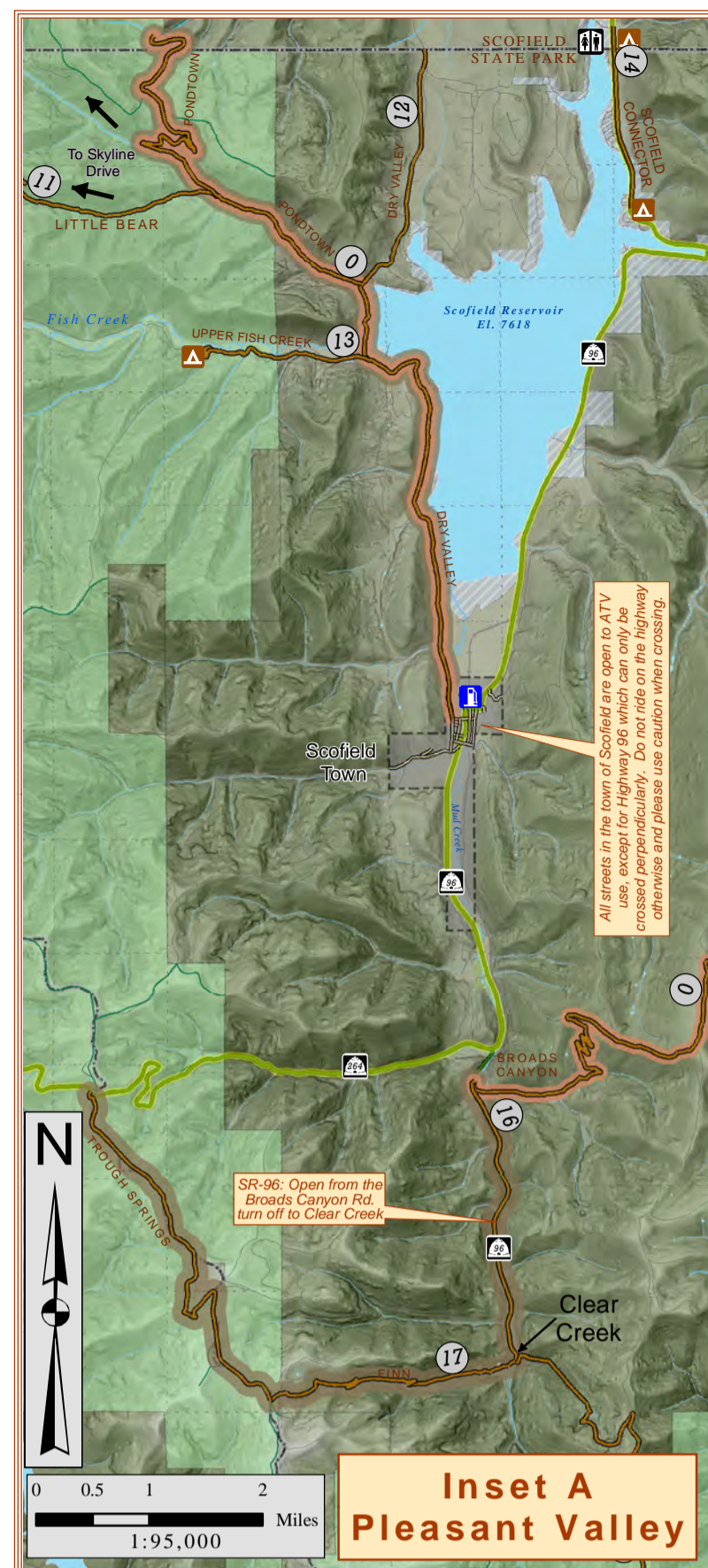
Scan the QR Code below for access to our digital map.

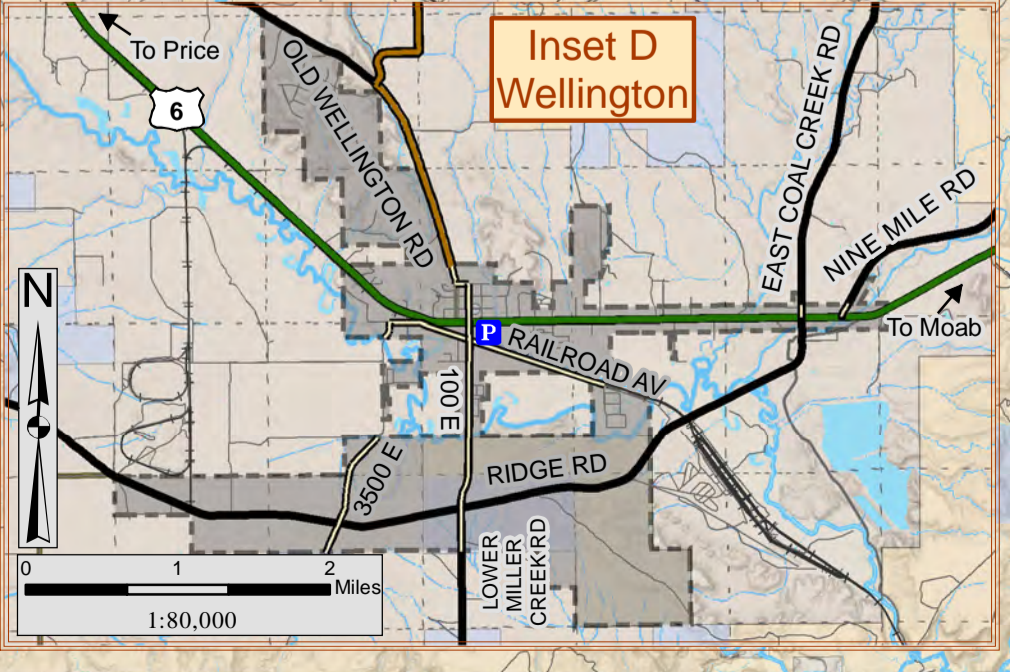
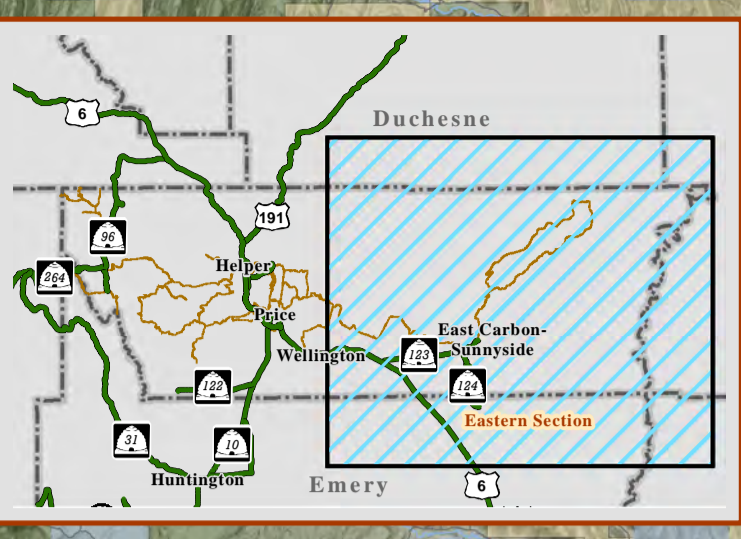
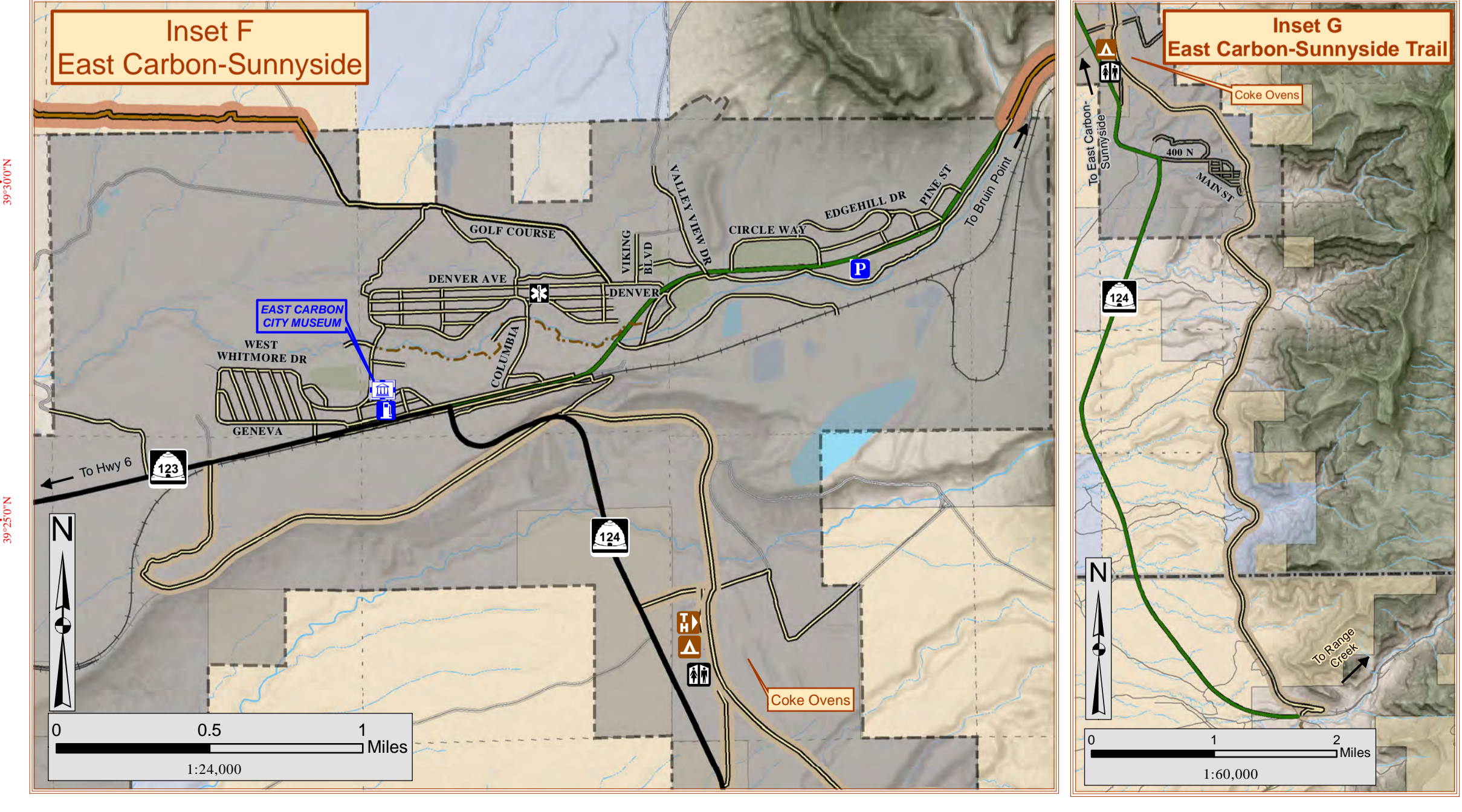
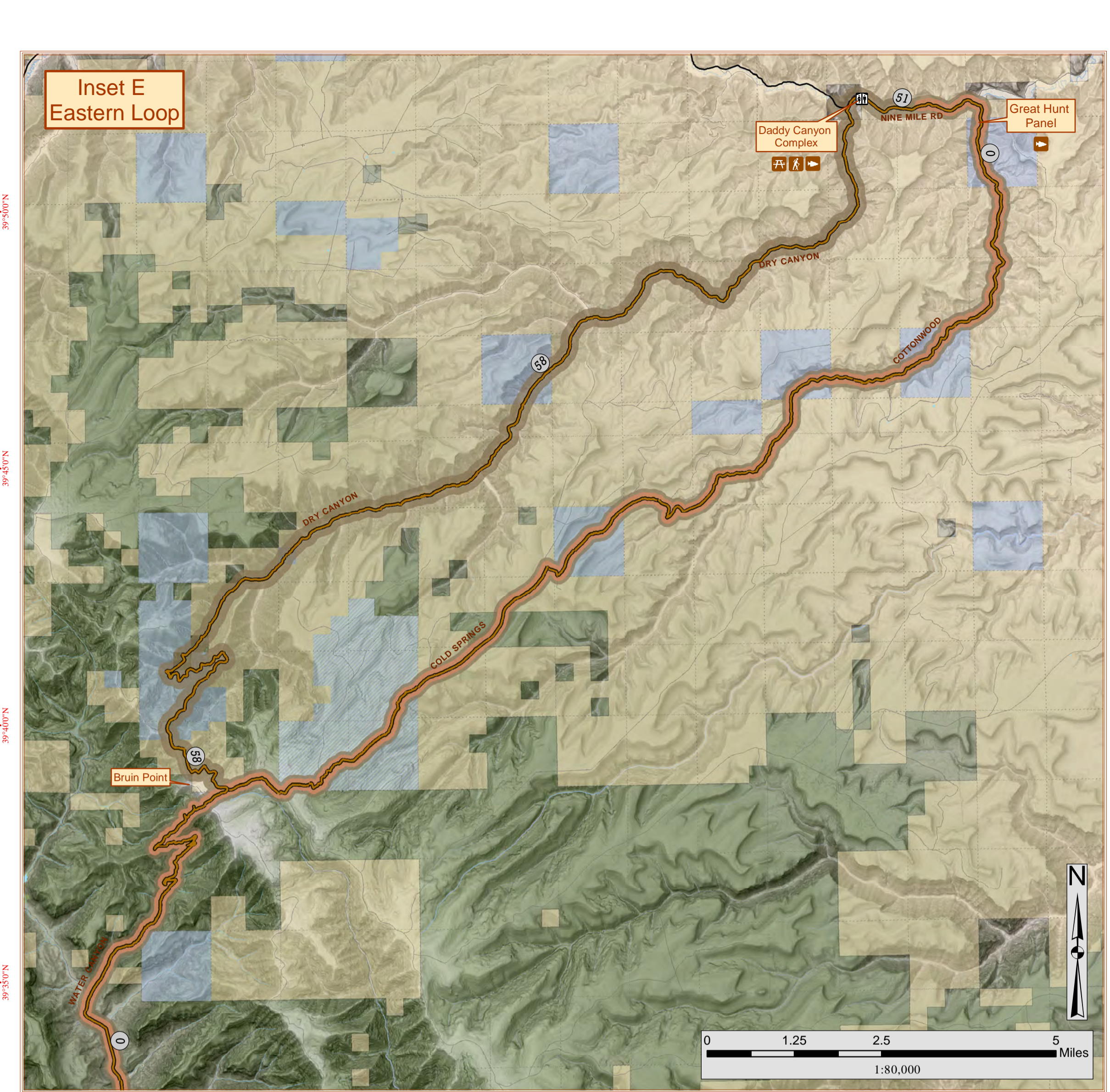
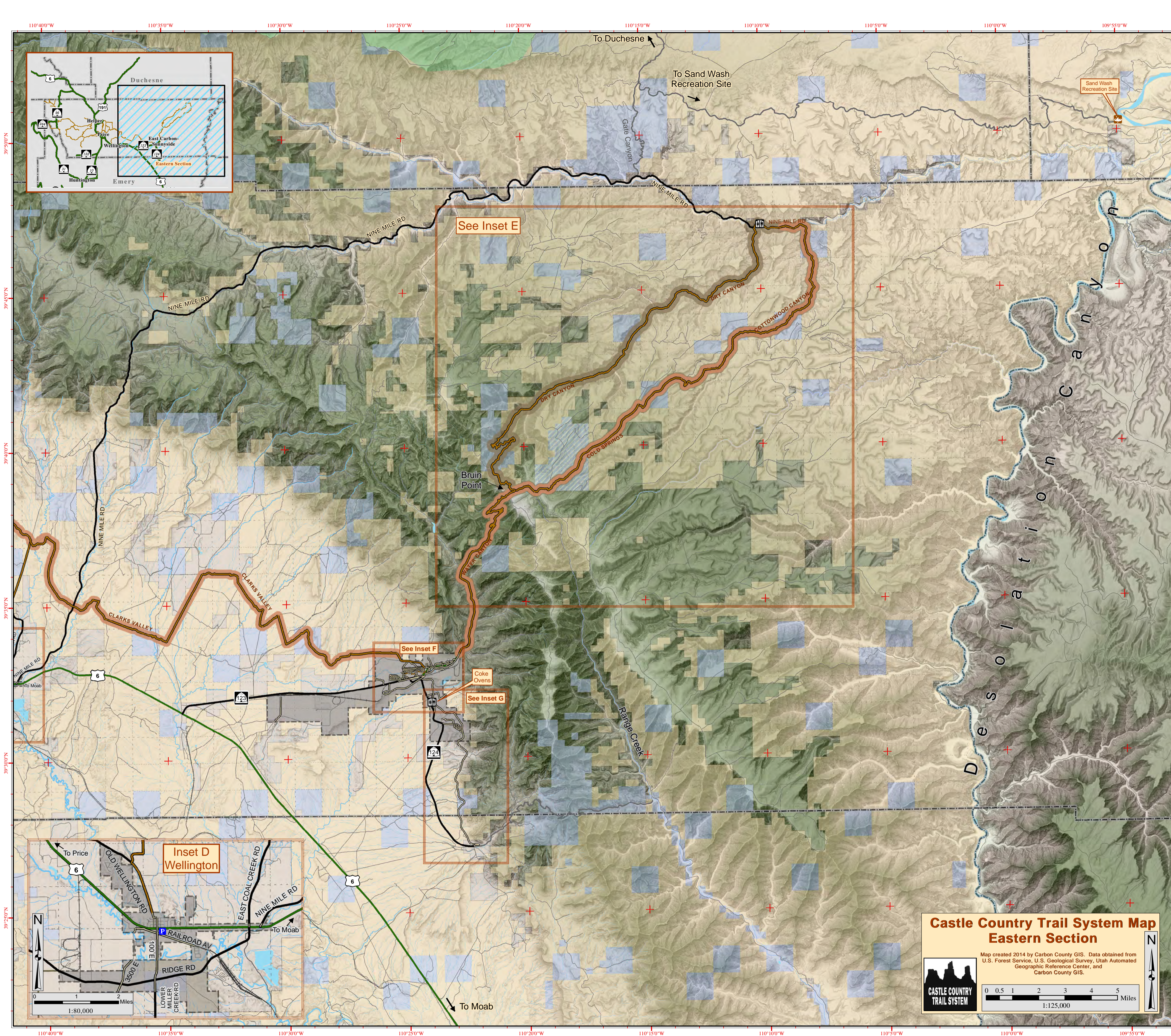


Carbon County Dispatch: (435) 637-0890  
Manti-La Sal National Forest Website: www.fs.usda.gov/mantilasal  
Bureau of Land Management Website: www.blm.gov/utah/price  
Forest Service Campground Information: 1-877-444-8777  
Utah State Parks Campground Information: 1-800-322-3770

## REMEMBER...

- Keep it clean.
- Plan to carry out more than you carry in.
- Practice minimum impact camping.
- Leave no trace.





**Castle Country Trail System Eastern Section**

Map created 2014 by Carbon County GIS. Data obtained from U.S. Forest Service, U.S. Geological Survey, Utah Automated Geographic Reference Center, and Carbon County GIS.

Scale: 1:125,000

**Inset F East Carbon-Sunnyside**

Scale: 1:24,000

**Inset G East Carbon-Sunnyside Trail**

Scale: 1:60,000